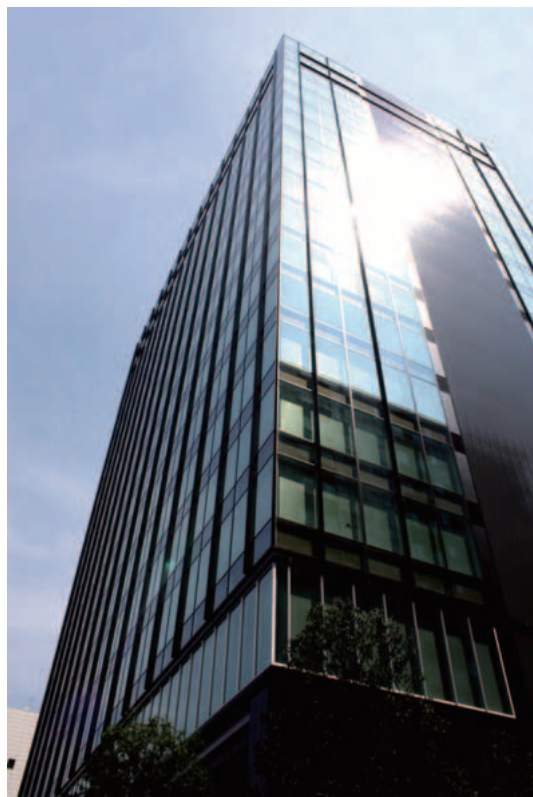



Oriental Motor Corporate Overview



Company	ORIENTAL MOTOR CO., LTD.		
Founded	1885		
Established	1950		
Representative	President Shigeyuki Nomura		
Capital	4 billion yen		
Sales	Consolidated 42.0 billion yen (At the end of March 2014)		
Number of Employees	Consolidated 2,826 (At the end of March 2014)		
Company Activity	Development, manufacture and sale of small precision motors and electronic circuits for motion control		
Correspondent Banks	The Chiba Bank, Ltd. Sumitomo Mitsui Banking Corporation The Bank of Tokyo-Mitsubishi UFJ, Ltd. The Hyakujushi Bank, Ltd. The Joyo Bank, Ltd. The Shonai Bank, Ltd. Mizuho Bank, Ltd. The Toho Bank, Ltd. The Akita Bank, Ltd.		
Head Office	Higashi-Ueno 4-8-1, Taito-Ku, Tokyo, Japan		
Branch Offices	<p>Tokyo Branch Office</p> <p>Nagoya Branch Office</p> <p>Osaka Branch Office</p>	<p>Kyoto Branch Office</p> <p>Kyushu Branch Office</p>	
Branch Stores	<p>Sendai Branch Store</p> <p>Northern Kanto Branch Store</p>	<p>Yokohama Branch Store</p> <p>Hachioji Branch Store</p>	
Sales Offices	<p>Kitakami</p> <p>Niigata</p> <p>Koriyama</p> <p>Katsuta</p> <p>Tsukuba</p> <p>Utsunomiya</p> <p>Tokyo</p> <p>Ueda</p> <p>Suwa</p>	<p>Kumagaya</p> <p>Kawasaki</p> <p>Hiratsuka</p> <p>Kofu</p> <p>Toyota</p> <p>Shizuoka</p> <p>Hamamatsu</p> <p>Kanazawa</p> <p>Mie</p>	<p>Hikone</p> <p>Shiga</p> <p>Minami-Osaka</p> <p>Hyogo</p> <p>Okayama</p> <p>Hiroshima</p> <p>Matsuyama</p> <p>Oita</p> <p>Kumamoto</p>
R&D Center Factories	<p>Tsuruoka-Chuo Plant</p> <p>Tsuruoka-Nishi Plant</p> <p>Tsuruoka-Higashi Plant</p> <p>Soma Plant</p> <p>Tsukuba Plant</p> <p>Tsuchiura Plant</p> <p>Kashiwa Plant</p> <p>Toyoshiki Plant</p> <p>Kofu Plant</p> <p>Takamatsu-Kozai Plant</p> <p>Takamatsu-Kokubunji Plant</p> <p>Manufacturing Technology R&D Center (Joso, Ibaraki)</p>		
Associated Company	ORIM VEXTA CO., LTD. and others		

Manufacturing Base

Japan

<p>Tsuruoka-Chuo Plant Development and manufacturing of standard AC motors and brushless motor and driver packages. Development and manufacturing of cooling fans.</p>		<p>Tsuruoka-Nishi Plant Manufacturing of standard AC motors, brushless motors and gearheads.</p>	
	<p>Tsuruoka-Higashi Plant Manufacturing of motor components.</p>		<p>Soma Plant Development and manufacturing of stepper motors and control circuits.</p>
<p>Tsukuba Plant Development and manufacturing of stepper motors, servo motors and controllers.</p>		<p>Tsuchiura Plant Development and manufacturing of gearheads and motorized actuators.</p>	
	<p>Kashiwa Plant Research and development on the ideal accessories and peripheral equipment for every product.</p>		<p>Toyoshiki Plant Evaluating, analyzing, and measuring various products.</p>
<p>Kofu Plant Development and manufacturing of control circuits, and development of manufacturing technology.</p>		<p>Takamatsu-Kozai Plant Development and manufacturing of stepper motors.</p>	
	<p>Takamatsu-Kokubunji Plant Manufacturing of stepper motors.</p>		

Global Regulations & Standards

ISO 9001, ISO 14001

Corporate Overview

Global Sales Network

How to Use Web Sizing Tool

Conversion Charts

Product Line Updates

Product Index